

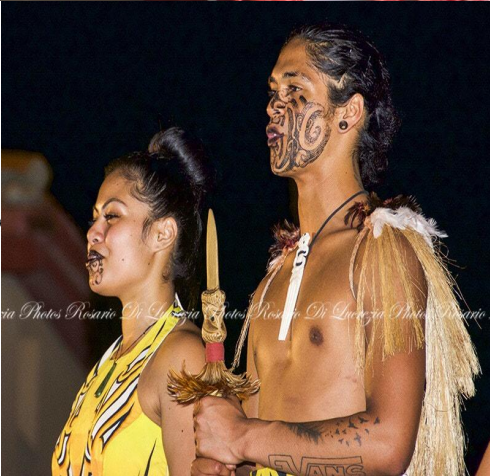
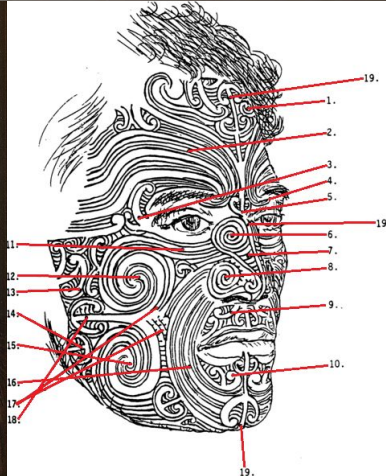
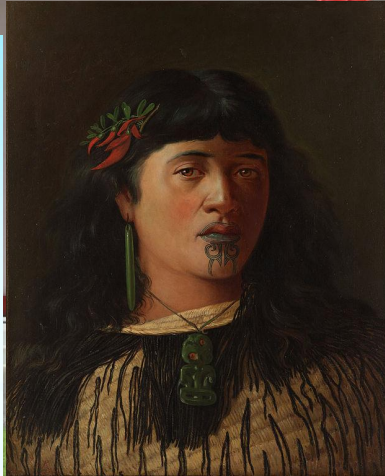
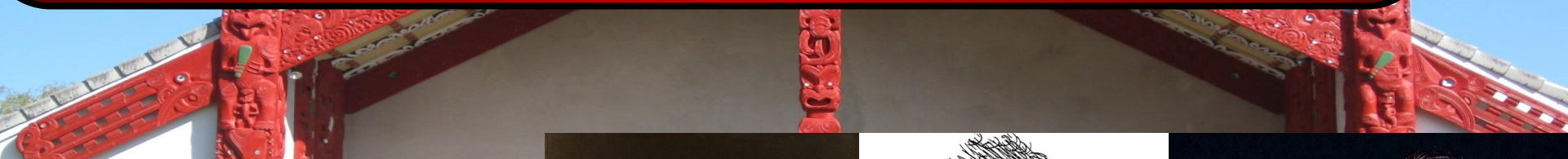


Moko kowai
Project

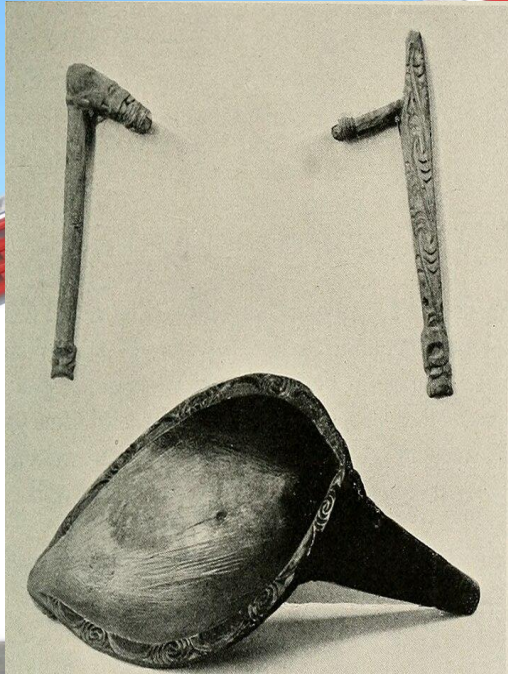
By M Block

Moko Kowai

A moko is a Maori tattoo/pattern that only Maori people can get. Represents a woman's whanau and leadership within her community recognising her whakapapa status-
Koepa



Here are some tools they used to make mokos - Oshee

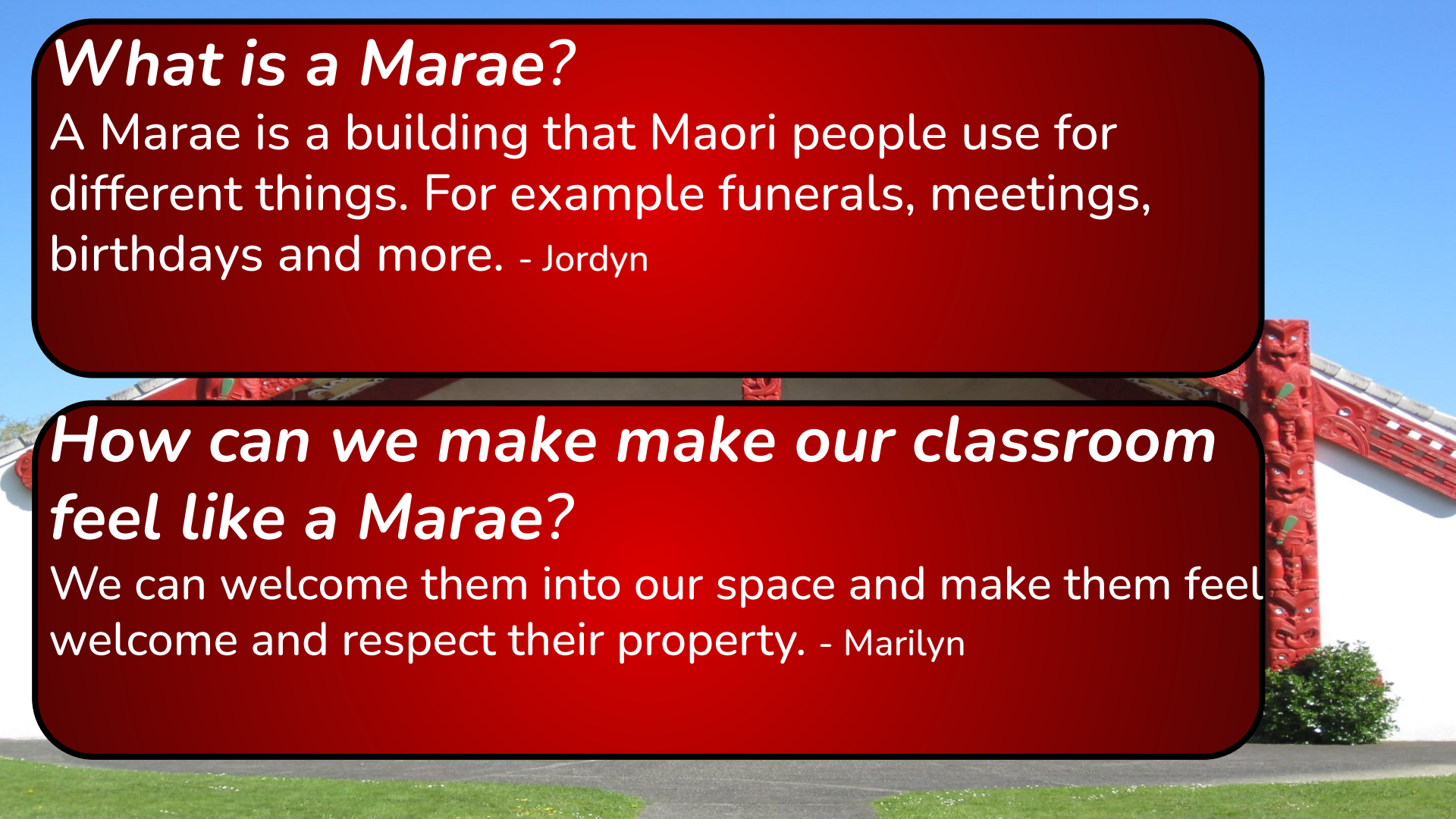


What is a Marae?

A Marae is a building that Maori people use for different things. For example funerals, meetings, birthdays and more. - Jordyn

How can we make make our classroom feel like a Marae?

We can welcome them into our space and make them feel welcome and respect their property. - Marilyn



About the tekoteko.

- The tekoteko represent ancient tribal ancestors, the ancestors watch, protect and guardianship over guests. - Sekope
- When an intruder tries to enter into a marae the tekoteko puts a curse or uses their mere to ward off the intruder. - Oshee

